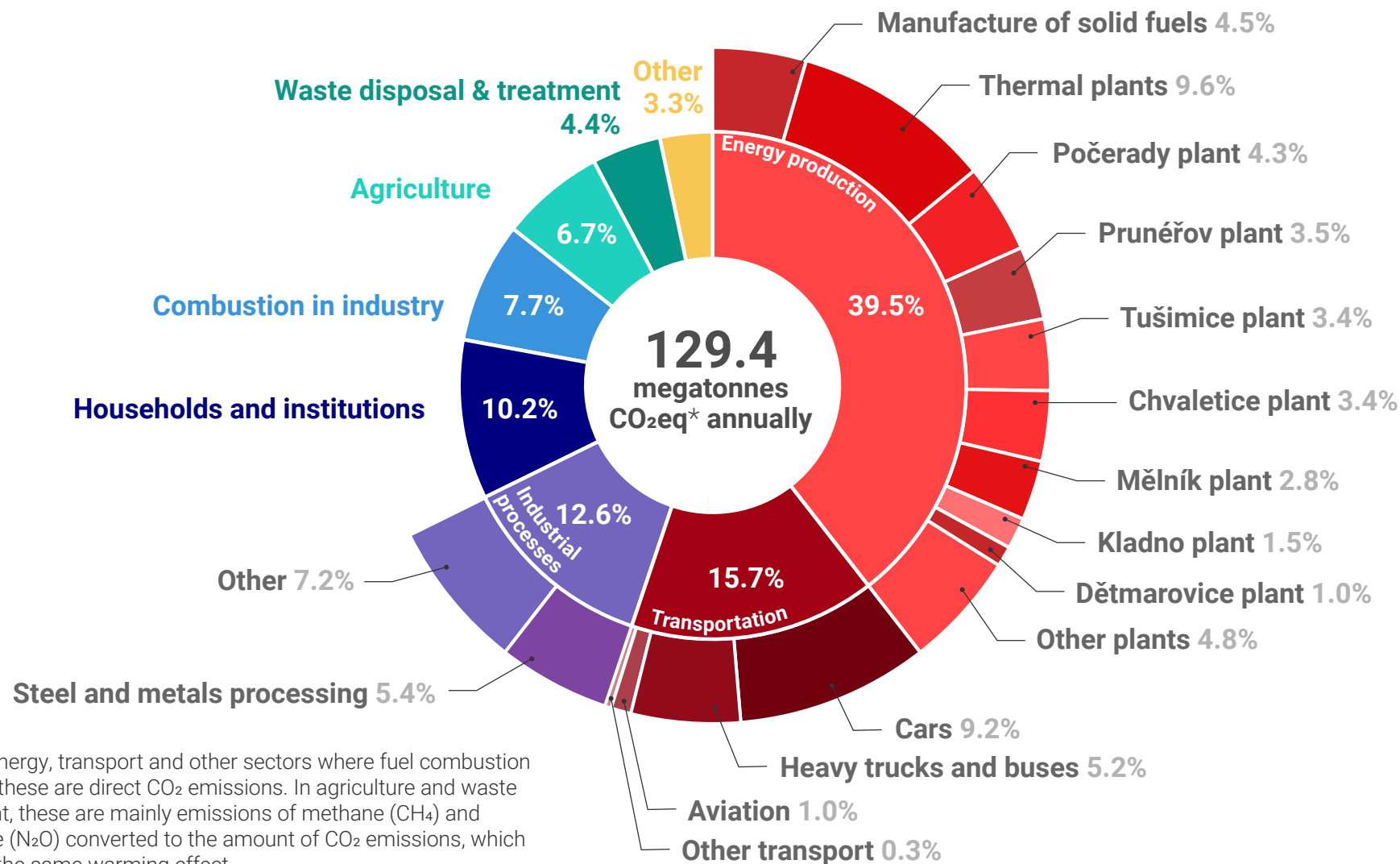


GREENHOUSE GAS EMISSIONS IN CZECHIA BY SECTORS

Czechia's total emissions in 2018



*CO₂eq: In energy, transport and other sectors where fuel combustion is essential, these are direct CO₂ emissions. In agriculture and waste management, these are mainly emissions of methane (CH₄) and nitrous oxide (N₂O) converted to the amount of CO₂ emissions, which would have the same warming effect.