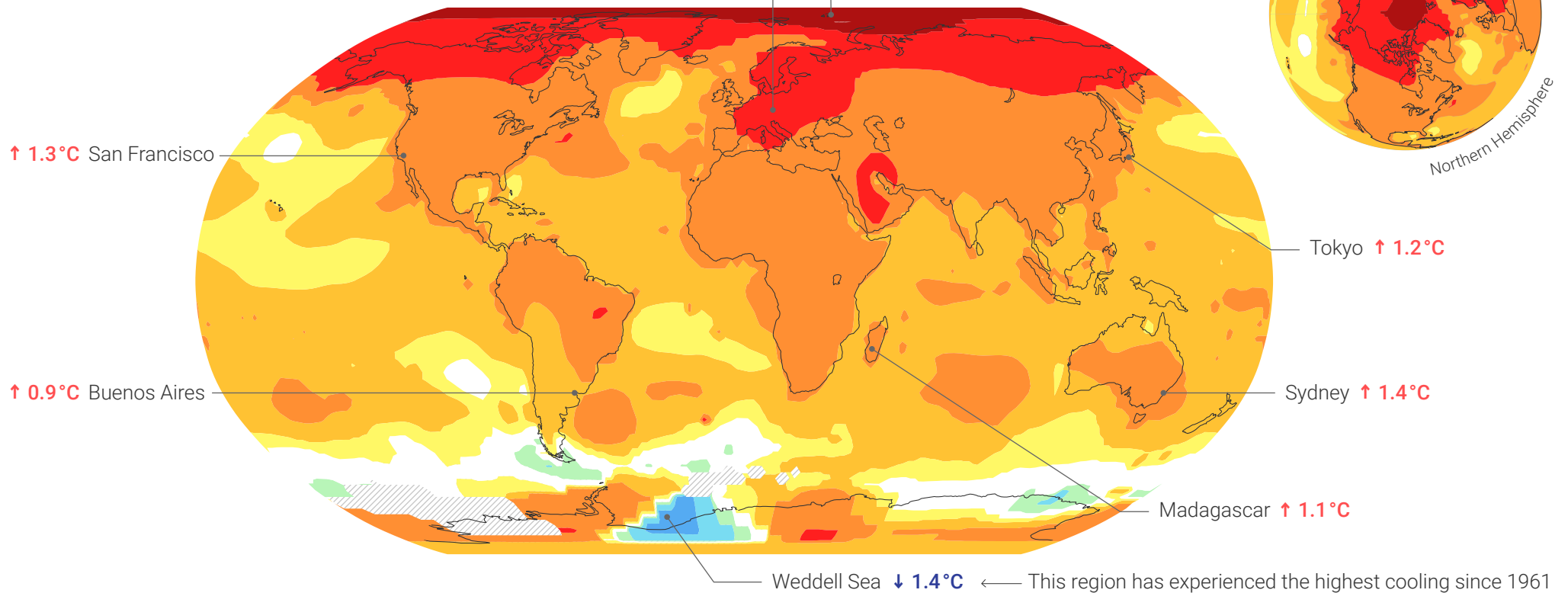
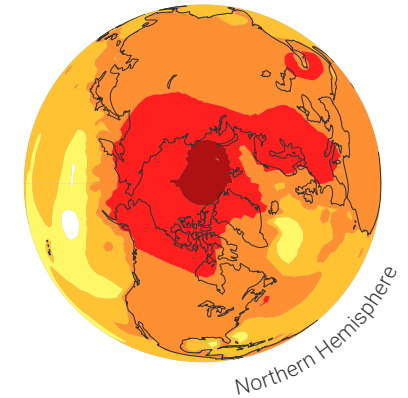


MAP OF TEMPERATURE CHANGES (1961–2019)

The speed of climate change is not the same around the globe. For example, **when compared to oceans, continents warm approximately twice as fast.**

↑ 3.7°C The region has **warmed** by 3.7°C
↓ 1.4°C The region has **cooled** by 1.4°C

↑ 2.2°C Czech Republic Franz Josef Land ↑ 4.9°C
This region has experienced the highest warming since 1961



TEMPERATURE CHANGE (°C)



Insufficient data